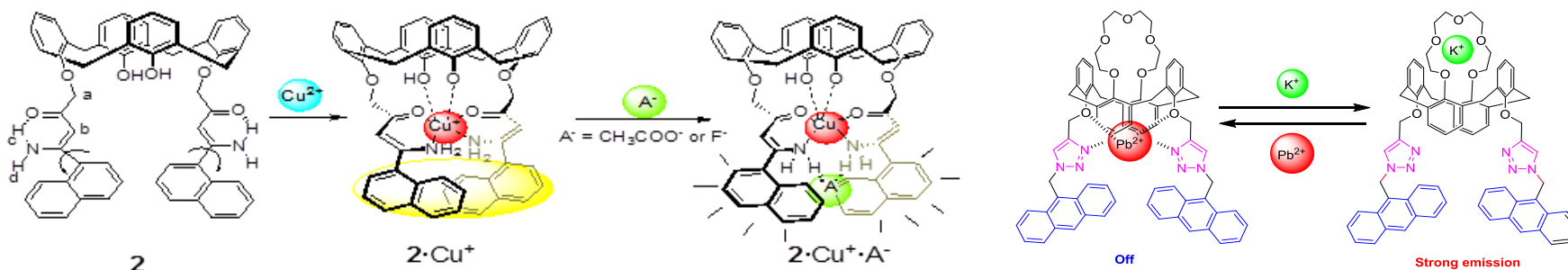


## Prof. Wen-Sheng Chung / Department of Applied Chemistry

## (Organic) Supramolecular Photochemistry Lab

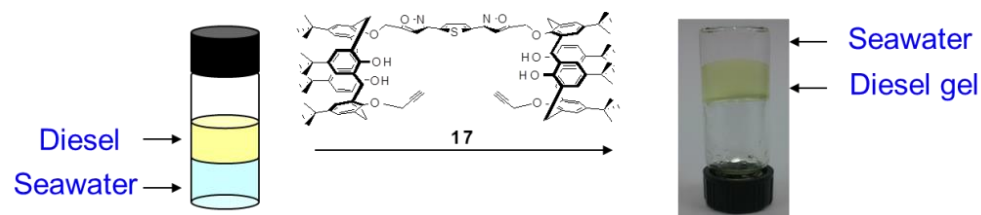
- The design and synthesis of **fluorogenic** and **chromogenic** sensors based on calix[4]arenes for the detection of heavy and transition metal ions especially those with hetero- and homoditopic **allosteric effects**, and **inherently chiral properties**.



• *Chem. Eur. J.* **2009**, *15*, 6152.

• *Org. Lett.* **2007**, *9*, 3363.

- The design and synthesis of **supramolecular gelators**, which may be useful for oil spill recovery, bio-mimics, or for ion sensing that can be used for environmental cleaning or drug delivery.



- *Org. Lett.* **2013**, *15*, 5830-5833;
- *Chem. Commun.*, **2013**, *49*, 3037-3039.