

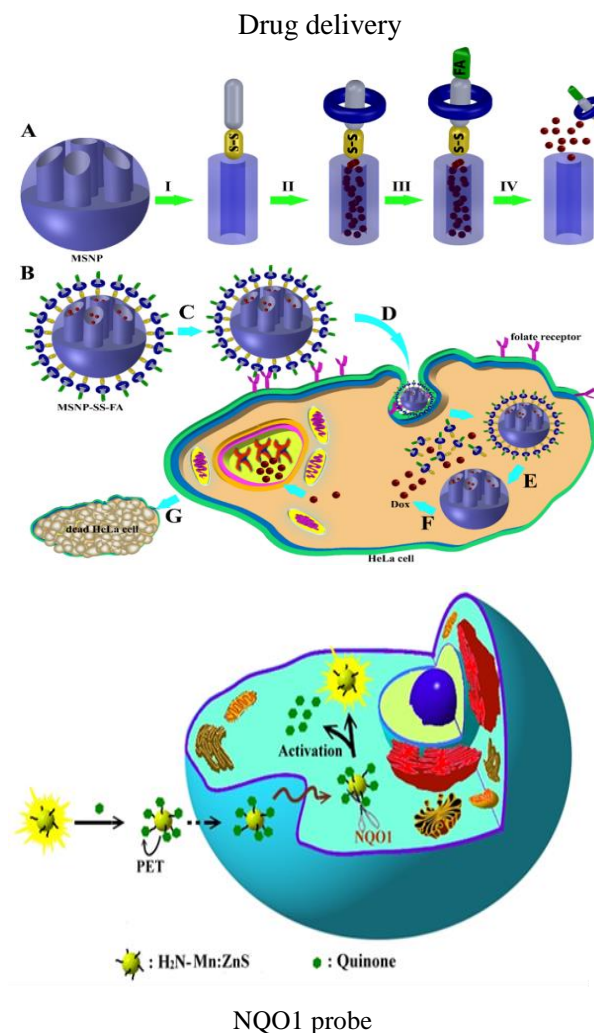
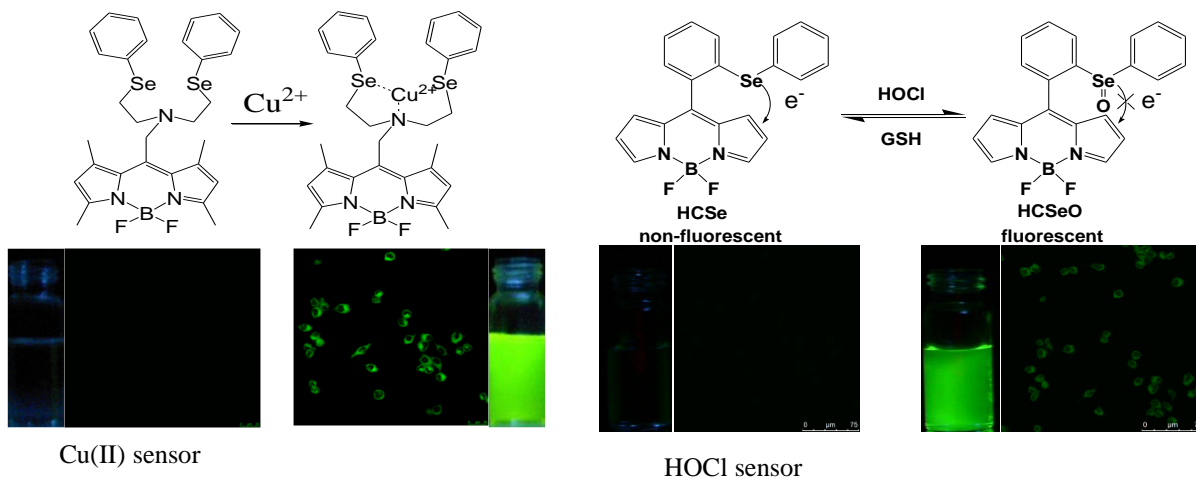
Prof. Shu-Pao Wu / Department of Applied Chemistry

Bioinorganic Chemistry, Protein, Biomaterials

We are “Bioinorganic Chem Lab” of the Applied Chemistry Department, NCTU. Our research efforts combine inorganic chemistry with biochemical tools in an interdisciplinary approach to study metal ion homeostasis and design biomaterials for clinic use. Topics of current interest include:

1. Metal ion sensor
2. Bio-sensors:
3. MSNPs drug delivery

Key Facilities: UV-Vis spectrometer, High performance liquid chromatography (HPLC), Fluorescence spectrometer, Fluorescence microscope, Cell incubator



NQO1 probe