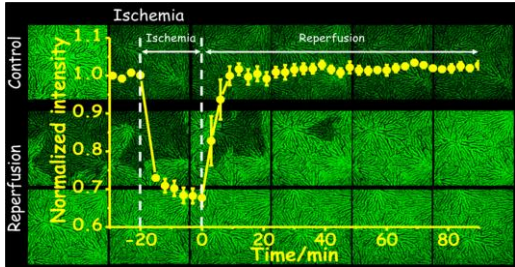
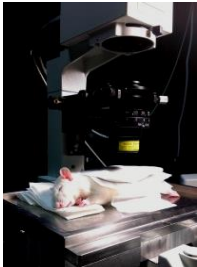


# 廖奕翰教授 / 應用化學系

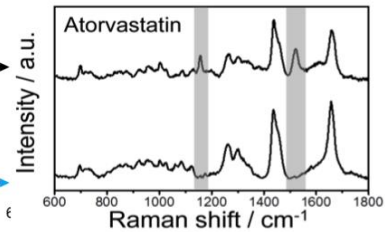
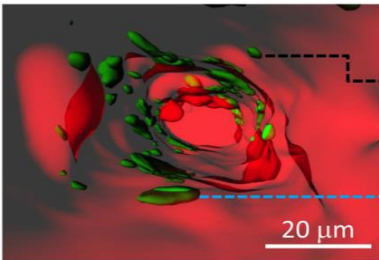
生醫分析及生物物理化學、生醫光電於轉譯醫學及藥物開發之應用、應用斑馬魚研究人類心血管疾病

廖奕翰教授生醫光電實驗室主要研究興趣為心血管疾病(包括心肌梗塞、腦中風及猝死)相關之轉譯醫學、藥物篩選技術及動物疾病模型之開發。透過與臨床醫師之緊密合作，已建立一個跨領域生醫研究團隊。實驗室具有多面向之生醫研究技術及設備包括：多光子顯微成像、雷射共焦掃描顯微鏡、拉曼及螢光光譜分析、長時活細胞及動物成像、動態三維影像重建及分析、雷射顯微手術以及細胞培養、斑馬魚養殖系統、基因轉殖等。

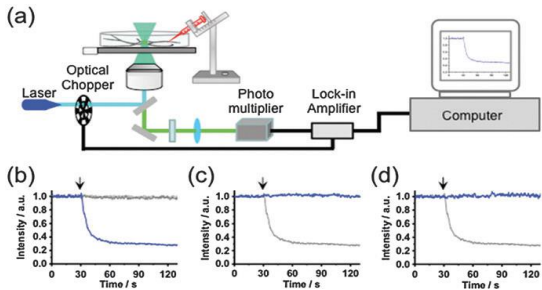
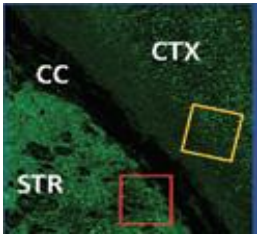
近期之代表性研究成果包括：



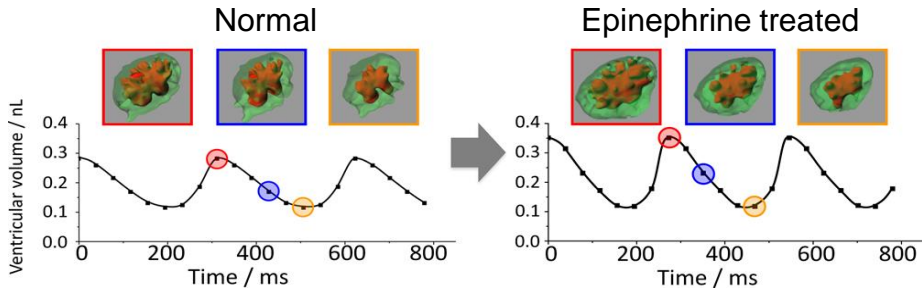
Anal Chem 2014 Intravital imaging of hepatic ischemia-reperfusion of rats with mitochondrial autofluorescence



Anal Chem 2014 Raman spectral assessment of anti-atherosclerotic effect of drugs on hypercholesterolemic zebrafish



ChemComm 2015 Towards live-cell imaging of neurotransmission with fluorescent neurotransmitter analogues



Anal Chem 2014 Pseudodynamic 3D cardiac imaging for determination of cardiac function of zebrafish