

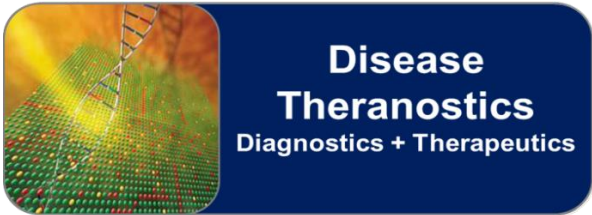
# Prof. Hsin-Yun Hsu / Department of Applied Chemistry

Biological Sensing & Assay Development; Biomaterials; Drug Delivery Systems

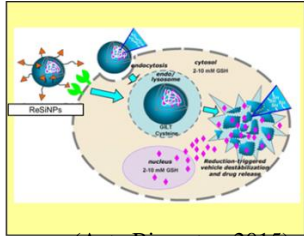
Bioanalytics and Controlled Drug Delivery Lab

Our research interests focus on:

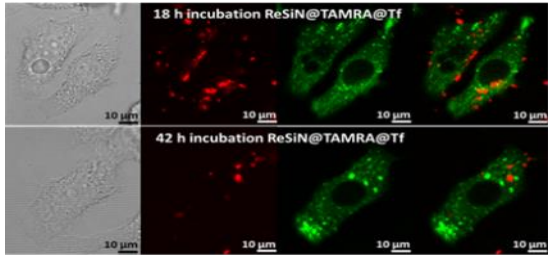
- Silica- and Carbon/Graphine Oxide-based nanomaterials for targeted, controlled drug delivery
- Multi-color fluorescence probes for cell imaging, flow cytometric analysis and high throughput suspension microarray
- Identification of disease biomarker and development of novel antibody-like peptides for post-translation modification (ubiquitination) analysis and profiling



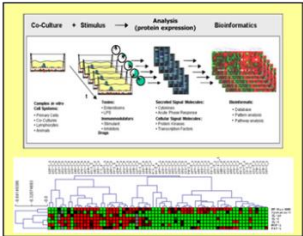
Bioimaging /Drug Delivery



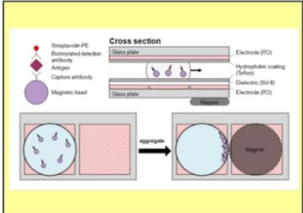
(Acta Biomater. 2015)



Profiling



Biosensors / Array Chips

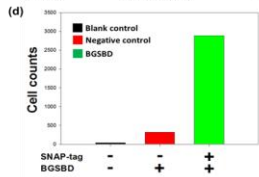
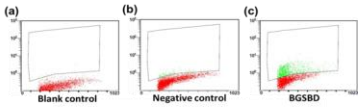


(Proc. IEEE, 2015)

- Suspension microarray for biomarker screening
- Diagnosis of the onset of disease
- Targeted, stimuli-responsive drug delivery



(J. Mater. Chem. B, 2014)



(ACS Chem. Biol., 2014)