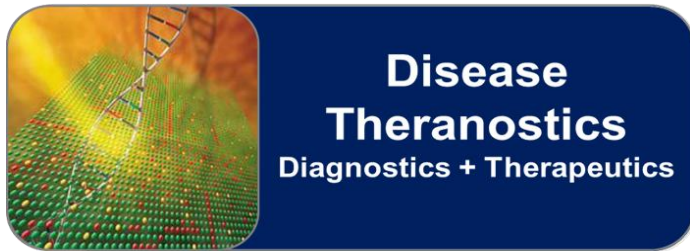
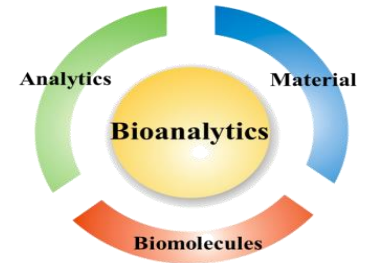


# 許馨云教授 / 應用化學系

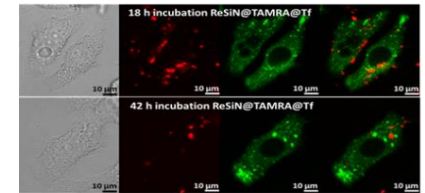
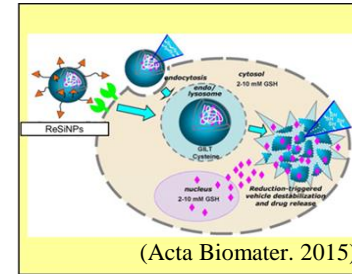
生物分析與感測、生物材料、藥物釋放系統

## 生物分析與藥物釋放控制實驗室:

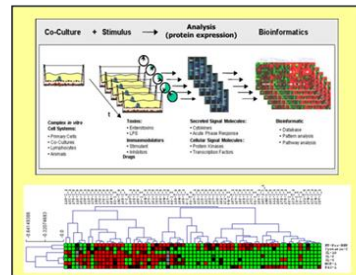
1. 矽與碳(石墨)為基材之奈米材料應用於標靶控制之藥物釋放系統開發
2. 開發螢光探針應用於細胞影像分析、流式細胞分選與懸浮式微陣列高通量篩選
3. 疾病之生物標識分子檢測與類抗體肽辨識分子開發以應用於蛋白質轉譯後修飾(泛素化)研究



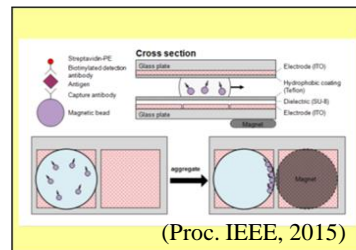
Bioimaging / Drug Delivery



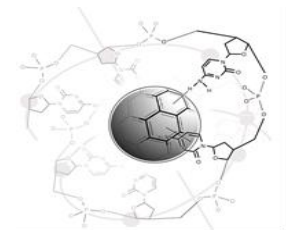
Profiling



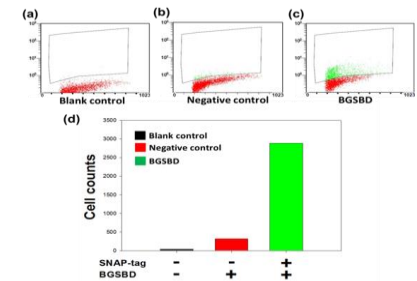
Biosensors / Array Chips



- Suspension microarray for biomarker screening
- Diagnosis of the onset of disease
- Targeted, stimuli-responsive drug delivery



(J. Mater. Chem. B, 2014)



(ACS Chem. Biol., 2014)