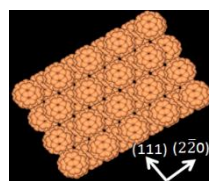
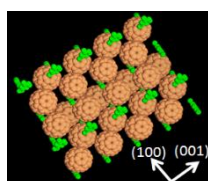
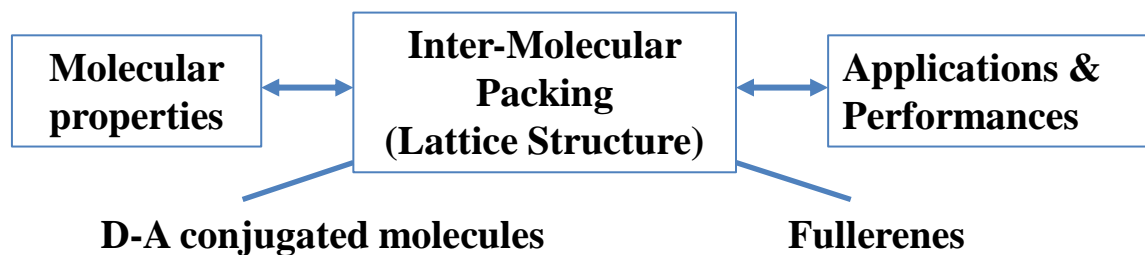


Prof. Chien-Lung Wang / Department of Applied Chemistry

Lab of Self-Assembled Functional Materials

**Supramolecular Chemistry & Multi-Scale Analysis of Conjugated Molecules**



Intermolecular Interaction Strength

*Adv. Mater.* **2013**, 25, 2445.

Backbone Linearity, Coplanarity and Rigidity

*Macromolecules*, **2013**, 46, 7687, *Polym. Chem.* **2014**, 5, 6472,  
*Adv. Funct. Mater.* **2015**, 25, 606, *Polym. Chem.*, **2015**, 6, 1309.

Backbone Conformation and c-Displacement

*J. Mater. Chem. A* **2015**, 3, 3968.

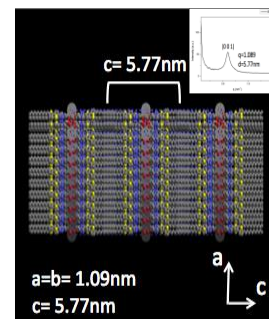
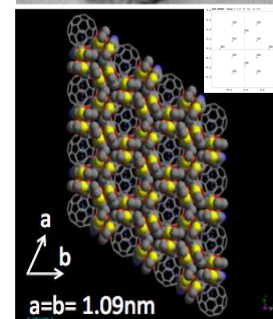
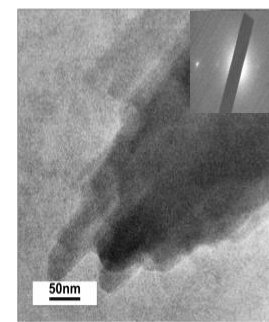
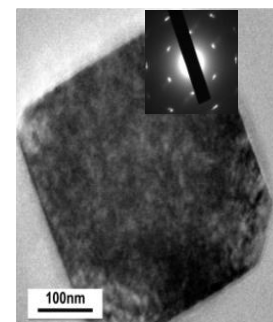
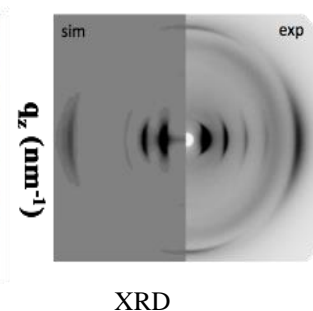
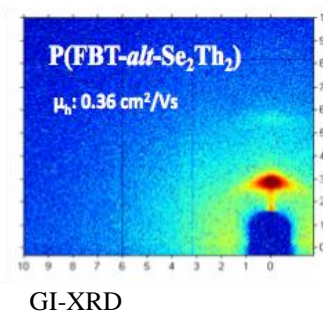
Backbone Sequential Randomness

*Polym. Chem.*, **2015**, 6, 3728.

Lattice Orientation and Charge Mobility

*Adv. Mater.* **2015**, 27, 4371

*Research Tools*



TEM and Lattice simulation